

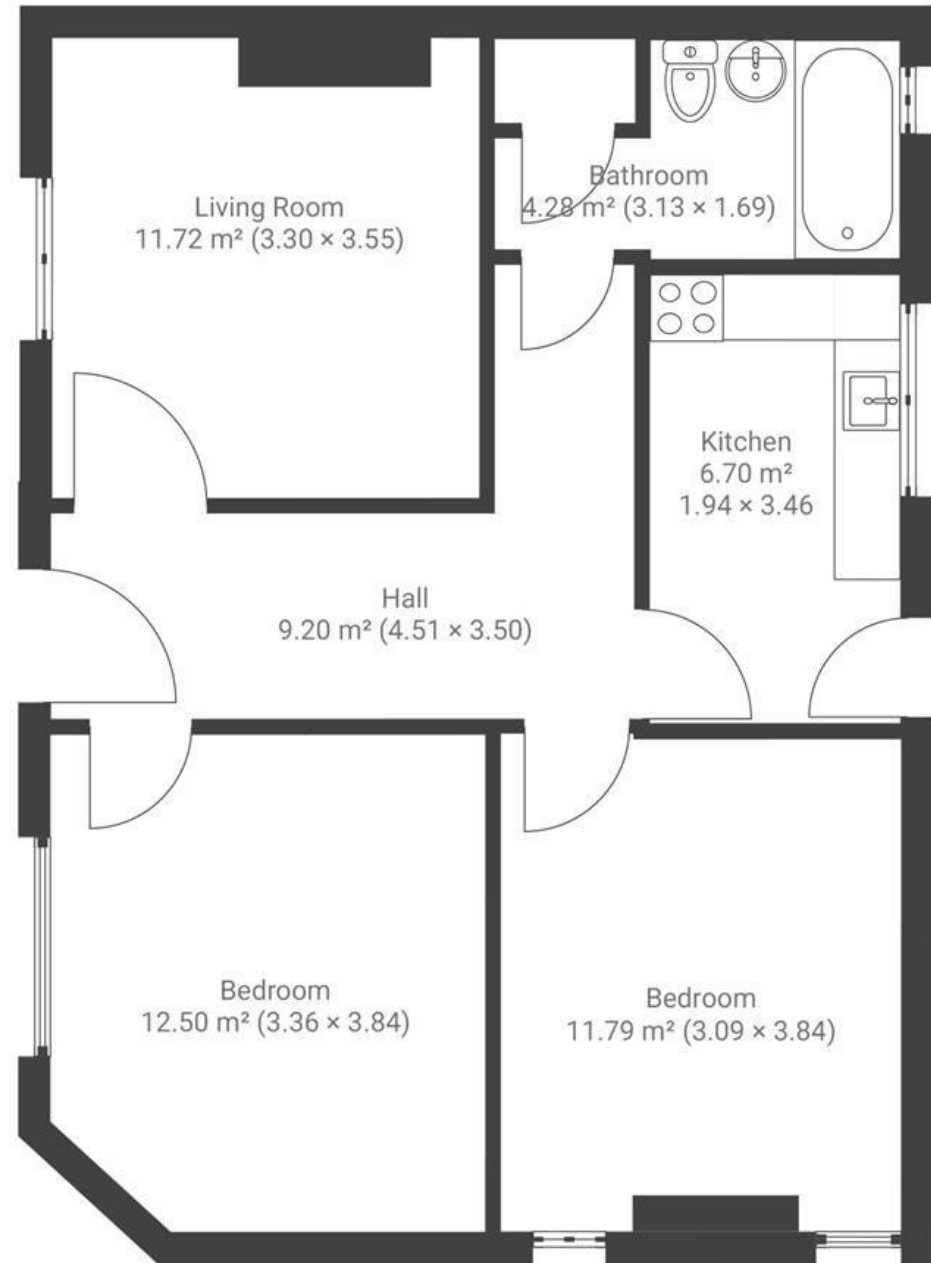
Upper Cheltenham Place

MONTPELIER

APPROXIMATE FLOOR AREA
60 SQM / 745 SQFT



GROUND FLOOR



~~Boardwalk~~

Upper , BRISTOL

£

£365,000



BS6 5HS

zZz

2 Bedrooms



1 Bathrooms

"We've absolutely loved living here. Being able to walk everywhere and discover the endless new cafes, bars and restaurants that pop up nearby has meant there's little room to get bored and friends love to stay! We'll take many fond memories with us – reading on our daybed in the summer sun, bumping into neighbours on a Sunday night in Mela, strolling Montpelier's colourful streets, and being the friends in the group that can host BBQs and link the TV to the garden during the Euros!"

